

**COMPANY PROFILE  
AND  
CORPORATE DATA**

### **INTRODUCTION- WHO ARE WE?**

Vogue Engineering Services (Pvt) Ltd. has a history of providing the most meticulous engineering services with utmost professionalism. Previously by the name of Vogue Building Essentials (Pvt) Ltd, the company came into being in the early months of year 2008 and was incorporated in the SECP in the year 2011. After several successful projects and eager to expand its range of products and services, the company was renamed Vogue Engineering Services (Pvt) Ltd with the following directors:

- Mr.Azharul Islam Zafar (Civil Engineer)
- Capt. (R) Emad ur Rehman (MBA)

Our products are manufactured as per international standards and pass through stringent quality control tests at various levels of production before marketing. Overtime Vogue Engineering Services (Pvt) Ltd has emerged as a successful company, now venturing into other areas of interest. Our construction related activities in the earth quake effected areas and various engineering related services have been launched with appreciation from concerned quarters.

We continually strive for the highest standards in product development, services and quality coupled with customer dialogue and satisfaction to provide the desired product and results. With a strong belief in Pakistan's growth potential, we continuously strive to provide state-of-the-art premium products through energy efficient, environmentally safe and technologically distinguished processes to give our customers the edge in energizing their lifestyles.

**PARTICULARS OF THE COMPANY**

Name:	Vogue Engineering Services (Private) Limited
Office Address:	2 <sup>nd</sup> Floor, Gulberg Trade Center (AMS Tower), 48,49 Business Park, Gulberg Greens, Islamabad, Pakistan.
Website:	<a href="http://www.vogue-engineering.com">www.vogue-engineering.com</a>
Machining & Fabrication	9km GT Road Near Imamia Colony Shahdra Lahore &Plot
Facility:	# 105, Yama Chowk, Near Capital Feed Mills, Hummak Industrial Area, Rawalpindi.
Office Phones:	+92-51- 5156016
Cell Numbers:	+92-300-8673445 (CEO ) +92-334-5104019 (Director Business Development)
Fax Number:	+92-51-8446020
Status of Firm:	Private Limited Company Registered with SECP
SECP Registration Number:	0074510 (corporate universal identification number)
PEC License Number:	7116 Category C-3 (Specialization Code BC-01)
National Tax Number:	Yes
Sales Tax Number:	Yes
Other Memberships	Islamabad Chamber Of Commerce And Industry

## **MISSION**

“PROVIDE STATE-OF-THE-ART ENGINEERING SERVICES TO DIVERSE CLIENTS WITH METICULOUS PROFESSIONALISM WHILE ENSURING HIGHEST STANDARDS OF QUALITY, SAFETY AND CRAFTSMANSHIP. ACHIEVE CUSTOMER SATISFACTION BY DELIVERING WHAT IS EXPECTED WITHIN STIPULATED TIME AND ALLOCATED RESOURCES”

## **VISION**

“TO BECOME THE MOST TRUSTED ENGINEERING SERVICES PROVIDER IN THE INDUSTRY WITH PROVEN TRACK RECORD. CONTINUOUSLY GROW WHILE EMBRACING THE LEARNING ENVIRONMENT PREVELANT IN THE COMPANY. EXPAND PRODUCT AND SERVICES PORTFOLIO TO CATER TO THE EVER INCREASING DEMAND AND REQUIREMENTS OF OUR DISTINGUISHED CLIENTS”

# QHSE POLICY

**We are committed to:**

- ✓ Safety, health, cares for environment and quality are a pre-requisite to any business we undertake.
- ✓ We all take personal responsibility for QHSE
- ✓ We apply this policy in our day to day behaviour and decisions.
- ✓ QHSE is 100% of our behaviour, 100% of time.

**We strive to be leading in QHSE to meet the following objectives:**

- ✓ Zero incidents
- ✓ Zero harms to communities in which we do business.
- ✓ Safe, secure and healthy working conditions for all our man power and everyone that works with us.
- ✓ Supplying safe, compliant and environmentally responsible products and services.
- ✓ Prevention of environmental pollution.
- ✓ Responsible use of natural resources.

- ✓ Research, development and promotion of the technologies, product and services that are sustainable with regards to QHSE.
- ✓ Satisfy customer's needs and expectations regarding QHSE.

**We Will:**

- ✓ Comply with all applicable legal, regulatory, internal and industry requirements.
- ✓ Pro-actively identify, eliminate or minimize potential resources of harm or risk arising from all our activities.
- ✓ Continuously improve our performances to achieve our objectives.
- ✓ Share our knowledge and experience in safety, health and care for environment.
- ✓ Show our accountability for our performance by regularly measuring, reviewing and reporting.
- ✓ Provide training, standards, equipments and support to ensure compliance with this policy.
- ✓ Maintain open communications with local communities and our stakeholders.

This policy is a key part of the VES's overall strategy and is reviewed on regular basis.

### **SCOPE OF WORK AND SERVICES**

Vogue Engineering Services is contributing towards the engineering industry with excellence in products & services. VES has the capabilities, resources and expertise to execute the works mentioned below with precision and safety.

- ✓ Manufacturing Of Polyurethane (PU) Sandwich Panels
- ✓ Prefabricated Steel Structures and Porta Cabins
- ✓ Pre Engineered Steel Buildings
- ✓ Specialized tunnel works
- ✓ Light & Heavy Fabrication
- ✓ Erection/ Installation Services
- ✓ Piping Works
- ✓ In house structural design & drafting

A brief introduction to our wide range of quality products and services are on proceeding pages.



Vogue Engineering Services (Pvt) Ltd. also highly capable in handling civil works and has a strong team of highly qualified engineers and consultants. The company is glad to receive continuous substantial support from many of our existing customers and business partners.

**Raazi Hospital (Alkhidmat Foundation) CBR Town Islamabad.**



**Gulberg Trade enter at Gulberg Green Islamabad.**



**The Torch Plaza (Civic Center Bahria Town Islamabad.)**





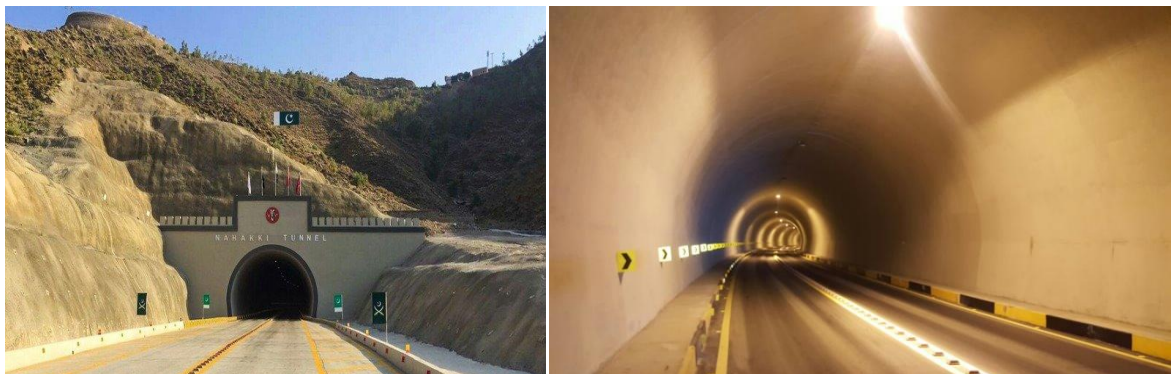
**Hamza Masjid at Gulberg Greens Islamabad. (IBECHS)**



**Jamia Ayesha Masjid at Gulberg Greens Islamabad.**



**Nahakki Road Tunnel (10m x 7.3m) Mohmand Agency FATA**



**Abdullah Ovais Arcade at PWD Pakistan Town Islamabad.**



**Tunnel Task Force Swat Moterway Zulmkot Betkhela (KPK)**



**BahadurKhel Tunnel of Old Bannu Road (Domail –Khurram) KPK**





**River Hills-2 (Phase-7Bahria Town Islamabad.)**



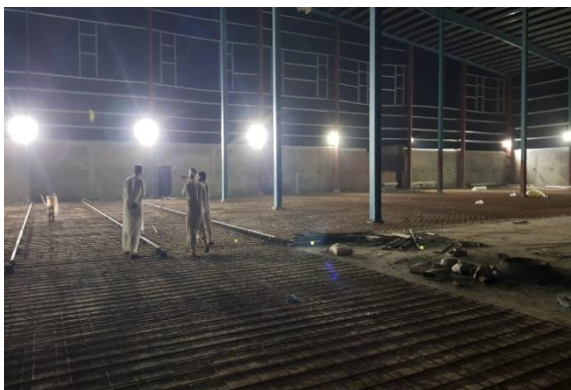
**Foundation work Army Fire Range**



**Madni Masjid at Pakistan Town-1 Islamabad. (IBECHS)**



**Civil work of Supply, Fabrication and Installation of Pre-Engineered Warehouse Building at Multan**





## **POLYURETHANE SANDWICH PANELS**

### **Applications:**

- All kinds of pre-fabricated steel buildings
- Cold Stores
- Food processing plants
- Warehouses
- Refrigerated and non-refrigerated vehicles
- Partition walls
- Fire-resistant rooms
- Agricultural project storage halls
- Fire chemical processing facilities
- Packing and distribution centres
- Exhibitions and shopping malls
- Sports and fitness complexes
- Stadiums
- Prefabricated class rooms and office

Realizing the potential and supply and demand gap in the regional market, we at Vogue decided to setup a polyurethane sandwich panels manufacturing facility in Lahore which is now operational.

The fully automated imported facility has the capability to produce sandwich panels up to a length of 50 feet with thickness ranging from 50mm to 200mm. Using high pressure injection machine the density of the insulation can be achieved up to 35 Kg/m<sup>3</sup> to 50 Kg/m<sup>3</sup>.

PU insulated panel is a composite prefabricated building material. It is made up of a rigid core sandwiched between two metal sheets. The rigid core is made of polyurethane which is known for its excellent heat insulation properties. Sheet thickness 0.4mm to 0.7mm.



## **PRE-FABRICATED STEEL STRUCTURES**

Vogue Engineering Services is experienced to plan, design, fabricate & Install all types of prefab steel structures. We provide a one stop shop for your building needs.

Our prefab building System aims to manufacture and supply prefabricated houses and buildings with its innovative, most modern and superb design and high quality construction.

Prefab system is ideally suited for large varieties of housing and building construction, including factories, warehouses, sport halls, workshops, aircraft hangers, ship yards, office buildings, commercial showrooms, distribution centers, supermarkets, small shops, restaurants and any one, two or three story building.

- Long service life
- Enhanced architectural appearance
- Expandable
- Easy to assemble
- Designed by keeping all kinds of climatic and seismic conditions in mind
- Re-locatable
- Easy to transport/Light weight
- Modular
- Multi-purpose

- Maximum usable space
- Fast Delivery & Installation
- Highest Quality- Built to last
- **Also Available Expanded Polystyrene Sheets (Any thickness)**









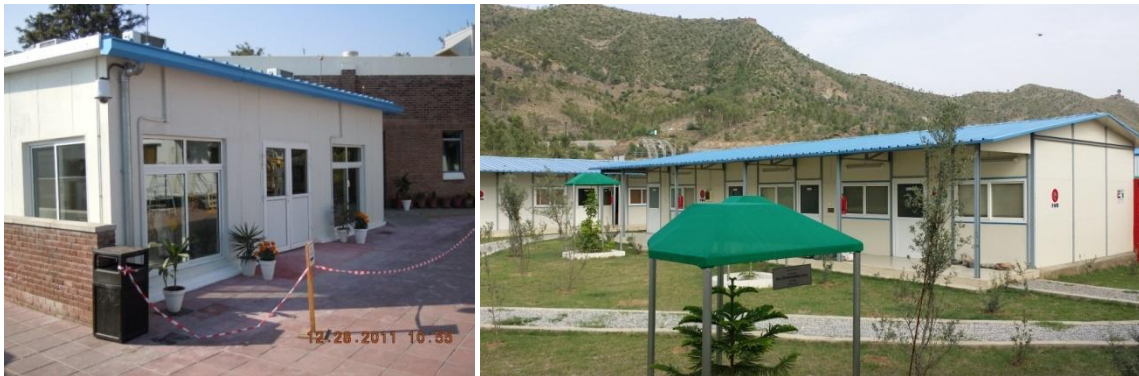










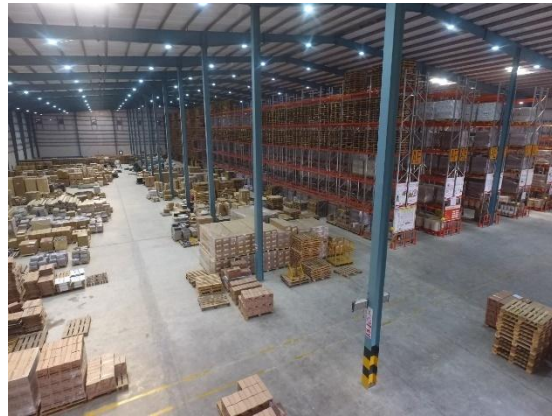






















**PORTA CABIN**



















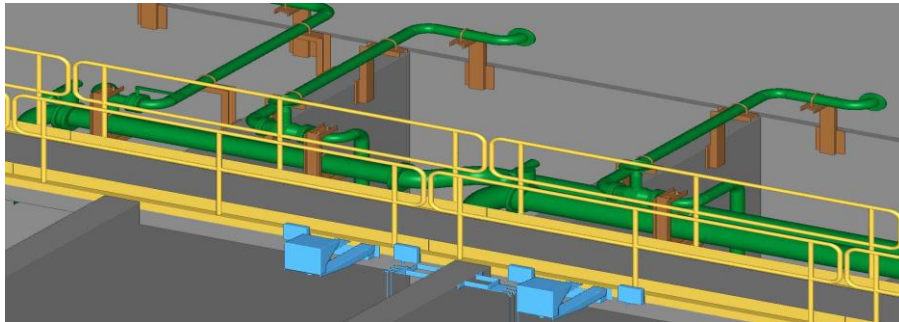




### **Steel Structures Storage Tanks & Allied piping works**

VES has capability & resources to provide fabrication & erection of above ground welded storage tanks in accordance with API 650 standard. We have developed a very competent & experienced team for the construction of all kinds and capacity storage tanks and allied piping jobs. VES has developed method statements for construction, risk assessments, hydro testing and vacuum box testing of bulk storage tanks.





### **Formworks**

We have the capabilities & resources to design, fabricate & erect any kind of formworks for hydropower & construction industry in accordance with ASME codes & OSHA regulations. Some of the benefits of our formwork solutions are

- Easy to shift
- Light weight
- Safe design
- Cost Effective Design
- Easy to install
- Long Service Life
- Easy to Transport
- Equipped with hydraulic jacking
- Equipped with vibrators







### **Gas Tight Doors (GTDs)**

Our doors & hatches are used in rooms, containers and buildings with requirements for air tightness; accompanying features are moderate blast resistance, fire resistance & sound reduction.

Typical applications are boilers rooms, engine rooms, electro rooms, control rooms and air locks.

VES doors are constructed of double skin carbon steel. Door frames are of profiled steel with flange for bolting into the host building structure.

Door are tested in accordance with NS 3206 for air tightness, we prefer single leaf GTDs as the performance of double leaf doors slightly deviate.





#### **Standard Specification**

Pressure Difference (Pa)	Leakage Rate ltr/m/hr
10	1.5
50	5
100	15
200	35
500	115

High level of performance can be achieved with special VES designs.

#### **Blast Proof Door (BPDs)**

The blast proof door is designed to protect human life from any accidental explosion that may occur in a petrochemical plant or in industrial manufacturing facilities, to offer disaster prevention for main facilities and to effectively manage & control explosion at military facilities.

Vogue Engineering Services is well versed in fabrication & erection of blast proof doors & hatches of all sizes & capacity. VES has the resources & logistics to provide on site fabrication, erection of BPDs & their locking mechanisms. Our skilled professionals have developed special techniques & methodologies to install heavy BPDs in constricted spaces with high degree of safety resulting most excellent performance during operation. VES fabrication & erections comply with following international standards

- ASME Boiler & Pressure Vessels VIII
- ASME Welding & Brazing Qualification IX
- ASME Non Destructive Examination V



**Double Leaf**

**Single Leaf**

### **Piping Works:**

Piping is used for industrial (process), marine, transportation, civil engineering and for commercial (plumbing) purposes. Management & staff of VES served the piping industry in its all aspects; now equipped & eager to take piping jobs in following in accordance with ASME B 31 & applicable international codes and standards

- Carbon steel piping
- Stainless steel piping
- MS piping



### **Installation/Erection:**

Vogue Engineering Services is experienced in assembly, installation & relocation of machinery & equipments, cooling towers, Hydronic system heating, AHUS, chillers, turn tables, steel silos, EOT cranes, communication towers, hydrants & fire protection systems.







## **HVAC**

VES is involved in providing HVAC services to its clients with upmost professionalism and expertise in following

- Heating/Cooling Load calculation
- Installation of chillers & AHUs
- Ducting Jobs
- HVAC piping
- Clean room design.
- Hydronic heating systems



## **NDT & Weld Inspections**

To provide quality welds and to avoid delays caused by weld repairs, VES hired experienced welding inspectors & NDT staff, qualified from Pakistan Welding Institute & National centre for Non Destructive Testing. This shows our quality concern & reliability of our services giving a leading edge to our competitors. We maintain a comprehensive quality record of

- WPS (welding Procedure Specification)
- WPQR (Welding Procedure Qualification Record)
- WPQ (Welding performance Qualifications)

Weld inspection & testing done & certified internally and by external independent body where necessary

## **In House Structural Design & Drafting**

Vogue engineering services Pvt. Limited is providing services in structural & machine part design using modern engineering design tools. We have expertise in following design tools

- Pro-engineer wildfire 4.0
- ANSYS
- CATIA V-5
- AutoCAD3D







### Clientelle and Major Projects

S.No	Client Name	Project Brief
1.	Frontier Works Organization	Classified (Fabrication and Installation)
2.	Pakistan Atomic Energy Commission	Various prefab and fabrication projects
3.	Quaid – e- Azam University	Misc. Pre engineered steel structures
4.	National Logistics Cell	Porta Cabin projects
5.	Mari Petroleum Company Limited	Supply, fabrication and portable camps
6.	Maritime Technologies Complex	Various fabrication and structural works
7.	Alhuda International	Prefab Projects
8.	Balochistan Copper and Gold Project	Prefabricated residential camp at Reko Dik, Balochistan.
9.	Directorate of Technical Development, PAEC	Prefab and pre engineered building projects with installation and commissioning of over head cranes.
10.	Frontier Works Organization	Mega prefab and other classified projects undertaken for various construction teams of FWO.
11.	National Development Complex	Fabrication, machining jobs , porta cabins and pre engineered buildings.
12.	Air Weapons Complex c/o Wah Aluminium	Various projects under taken

13.	Gulberg Trade Center (Pvt) Ltd	Various structural and fabrication jobs undertaken
14.	Global Pharma	Various structural and fabrication jobs undertaken
15.	Pak Georgia Limited	Various structural and fabrication jobs undertaken
16.	Allama Iqbal Open University	Prefab structures
17.	SENSHE Petroleum Company	Manufacturing of porta cabin camps for Ziarat, Mach and Kohat, Nawabshah camps. Approximately 100 fully furnished cabins.
18.	Frontier Works Organization (Motorway)	Construction of prefab camps and porta cabins at Thallian, Bhera and Sial
19.	Frontier Works Organization	Tunnel form works and concreting/ lining (Nahakki Tunnel Mohmand Agency)
20.	Pakistan Air Force Base Mianwali	Manufacturing of prefabricated indoor sports facility
21.	Presson Descon International Limited	Manufacturing of misc porta cabins for PPL site at GPF-II Gambat South Block.
22.	Fabcon Engineering Lahore	Various fabrication jobs
23.	National Foods	Prefabricated warehouse
24.	Distribution Firm	Pepsi Warehouse
25.	KCP Jauharabad	Various Projects
26.	DHA Bahawalpur	Portable Cabins
27.	Premier Chemicals Lahore	Pre engineered Buildings
28.	Defence, Science and Technology Organization (DESTO)	Pre engineered building projects
29.	Albario Engineering	Miscpre engineered buildings

30.	Swat Expressway (FWO)	Twin Tunnel project (supply of camp and tunnel works)
31.	Cadet College Jajja	Pre engineered Building
32.	Kartarpur Project	Manufacturing and supply of thumb impression facilities
33.	Agility Logistics	70,000 S.ft Pre Engineered Warehouse At Multan
<ul style="list-style-type: none"> <li>A variety of other big and small projects have been under taken for various other valued customers in fields of fabrication and machining.</li> </ul>		

### List of Key Personnel

S.No	Name	Qualification	Position
1.	AzharUl Islam Zafar	B.Sc (Civil Engineering), MBA	CEO
2.	Capt. (R) Emad Ur Rehman	MBA	Director (Business Development)
3.	Ajmal Mohammad	M.Sc (Structures)	Manager Design
4.	Umer Ashiq	B.Sc (Industrial Engineering)	Manager Planning & Execution
5.	Obaid ur Rasheed	B.Sc (Mechanical)	Manager Design (PEB)
6.	Atta Sarwar	DAE Civil	Planning Engineer
7.	Asad Ali	ICMA, MBA (Finance)	Finance Controller